

科勝科技
UTITECH TECHNOLOGY CO.,LTD.

AVEVA
SELECT TAIWAN

Smart Digital Factory 智慧化數位工廠

2023.09.28 (四)

12:40 ~ 16:00



焦點議題 Agenda

01

13:00 ~ 13:10 智慧化數位工廠

講師：李霖 Lin (科勝科技 / 產品業務)

02

13:10 ~ 13:50 挖掘企業金礦：大數據蒐集策略與效益

講師：蘇鵬仁 Pon (科勝科技 / 銷售顧問)

03

13:50 ~ 14:20 AI預測保養分析

講師：黃資昂 Nick (科勝科技 / 銷售顧問)

14:20~14:30 中場休息

04

14:30 ~ 14:55 企業資料保護盾 – Stratus Always On 不停機備援系統

講師：范文興 Edward (Stratus Technologies/大中華總監)

05

14:55 ~ 15:35 數位化轉型 / 數位分身

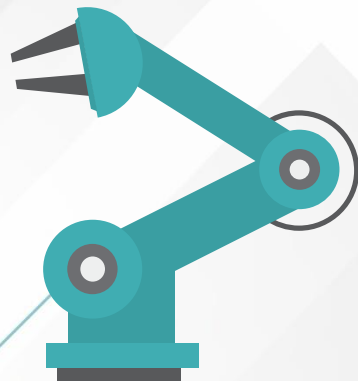
講師：郭智為 Will (科勝科技 / 銷售顧問)

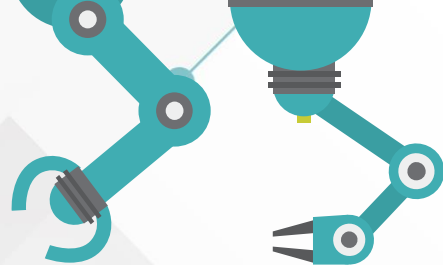
06

15:35 ~ 15:50 AVEVA FLEX Program

講師：李霖 Lin (科勝科技 / 產品業務)

15:50 ~16:00 Q & A






04 企業資料保護盾 – STRATUS ALWAYS ON 不停機備援系統

講師：Edward (Stratus Technologies)

Who are we?

 **Stratus global headquarters**
Maynard, Massachusetts USA

 **Global presence**
Americas – EMEA – APJ

Serving customers that require **maximum** application reliability



Oil & Gas



Metals & Mining



Consumer Packaged Goods



Food & Beverage



Life Sciences



Manufacturing



Water & Wastewater



Financial Services



Smart Buildings & Security









Protecting lives, assets and revenues since 1980


Over 40 hardware and software availability patents


Stratus solutions to solve your pain points

Pain Points (痛點)


- 01  Legacy networks
:Too many IoT devices?
- 02  Security concerns
- 03  Lack of IT Resources
:Talent Shortage
- 04  Reliability and Performance
:How to ensure maximum Uptime?
:How to protect data?
- 05  Multiple vendors, multiple solutions
:How to consolidate?
- 06  Lack of compute and open OS at the Edge

Stratus Solutions(解決方案)

Edge Computing with Redundancy 

Stratus Security Strategy → process & product security 

Product Simplicity – Less IT resources required 

99.999% uptime 

Workload Consolidation 

Flexibility to deploy application at the Edge 

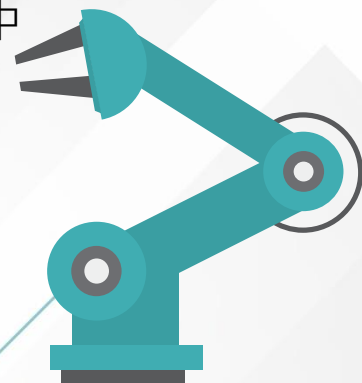
• Stratus Platforms

ftServer – scalable rack mount for control room

用於控制室的可擴充機架式架構

ztC Edge – robust and protected for remote or harsh environments

堅固而耐用，並保護您的應用環境或應用於遠端或惡劣環境當中



Stratus ftServer for Multi Application Deployments

Duplex Hardware Components



- Purpose built to provide Uptime unachievable by standard servers
- Simpler and cost effective against VMware cluster
- Manage like single x86 server
- Ideal for mission critical apps in the data center or remote sites

1. System ID button
2. System visual fault indicators (LEDs)
3. System ID button
4. System visual fault indicators (LEDs)
5. NMI (Dump) button
6. DVD R/W
7. USB port
8. USB port
9. Front panel
10. Power button
11. Internal 2.5" disk drives (16)
12. Release levers

What sets Stratus service apart from the competition? 是什麼讓 Stratus 服務在競爭中脫穎而出？

We promise quick resolution to customer service issues
我們承諾快速解決客戶服務問題



“Chaos Free Recovery”

When a component failure occurs on a server running a critical business application:

- **Our competition** goes into escalation and expedited response mode with promises of 4 hour repair time
- **For Stratus** “Chaos Free Recovery” means it’s just a normal day at the office

Standard Recovery vs. Chaos Free Recovery

Business operation degraded or halted

Standard Recovery

Major component failure occurs



Applications become unavailable



Vendor notified of outage



Customer and vendor engage in dialog



Issue diagnosed



Issue resolved remotely? If yes:

If no:



Service personnel dispatched



Service personnel travels to site



Repair process initiated



System restored to normal operation

Chaos Free Recovery

Major component failure occurs



System continues running flawlessly



Replacement part ordered and arrives next day



Administrator installs customer replaceable unit

No impact on business

Stratus Edge Computing Platforms: From Production Floor to Data Center

Production Line; Skid;
Smart Machine

Manufacturing Operations; Control Center; Data Center

ztC Edge 200i



ztC Edge 250i



ftServer 2920



ftServer 4920



ftServer 6910



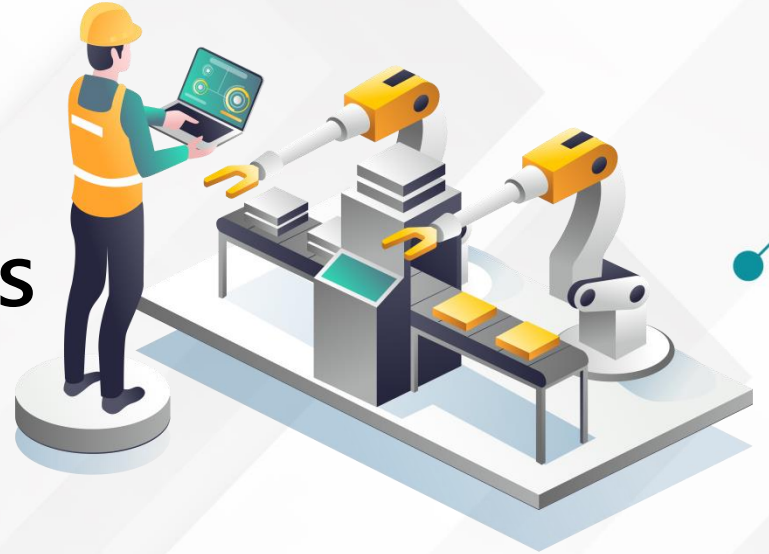
ftServer 6920



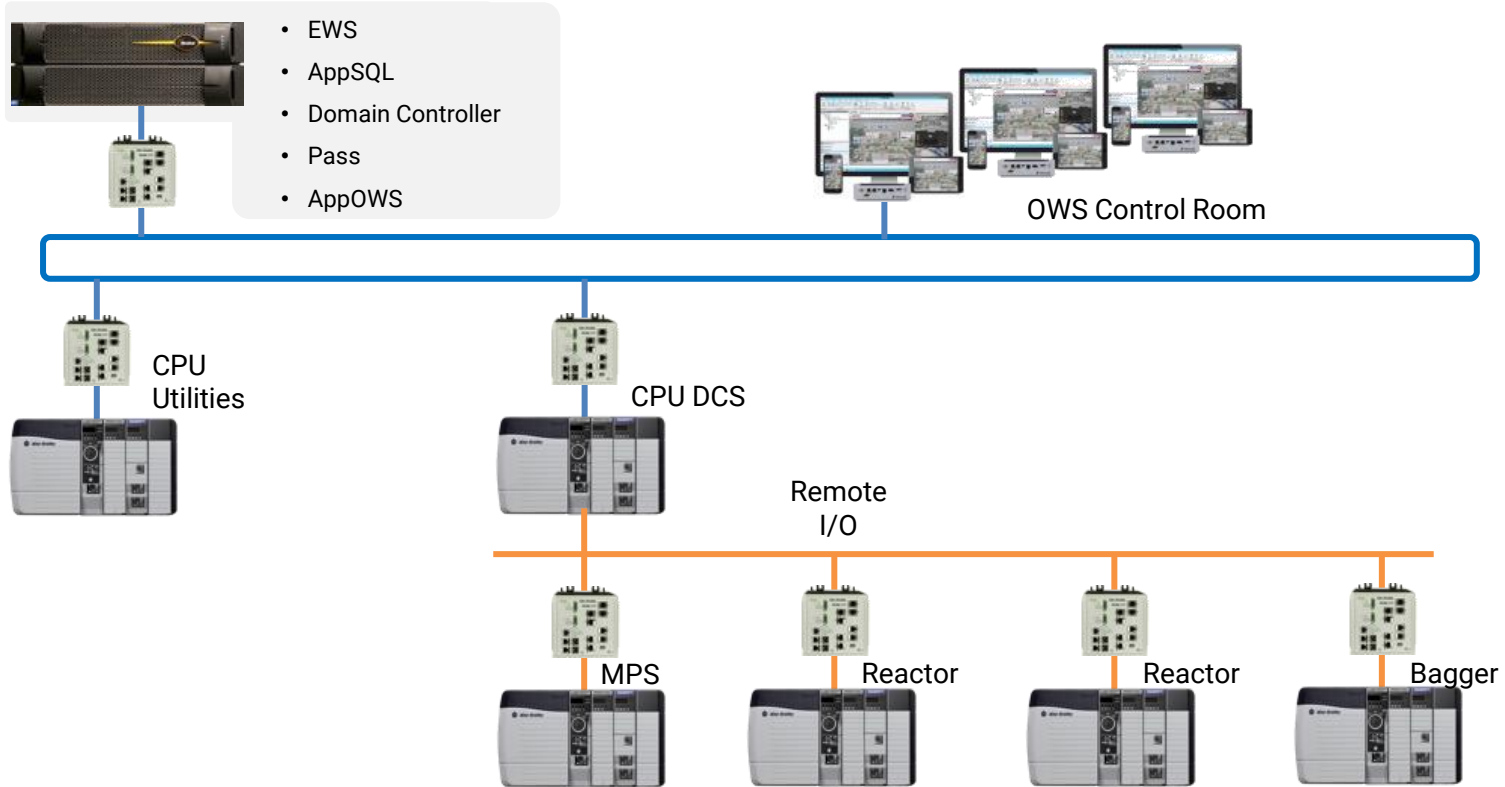
<5,000 I/Os	<10,000 I/Os
<4 VMs	<4 VMs
<10 thin clients	<20 thin clients
HA	HA or FT
C1D2, IP4	C1D2, IP40

10,000 I/Os	25-50,000 I/Os	100,000 I/Os	100,000+ I/Os
10+ VMs	20+ VMs	30+ VMs	30+ VMs
20+ thin clients	20+ thin clients	20+ thin clients	20+ thin clients
FT	FT	FT	FT
MDC	MDC	MDC	MDC

- **Reference Architectures**



Synthomer Reference Architecture

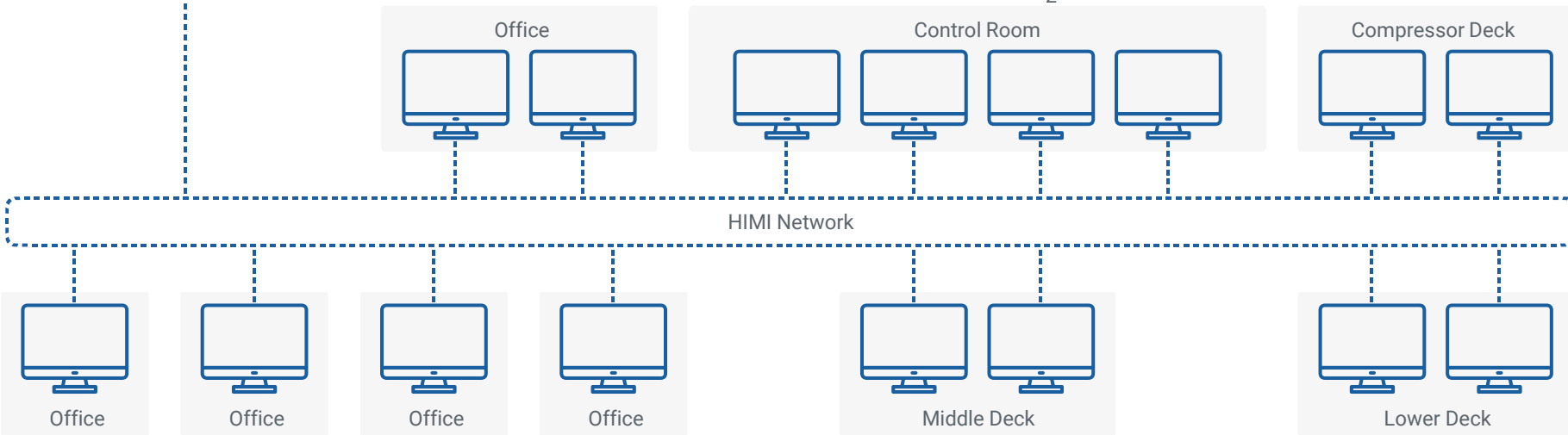


Oil and Gas: Bullwinkle Reference Architecture

Stratus ftServer

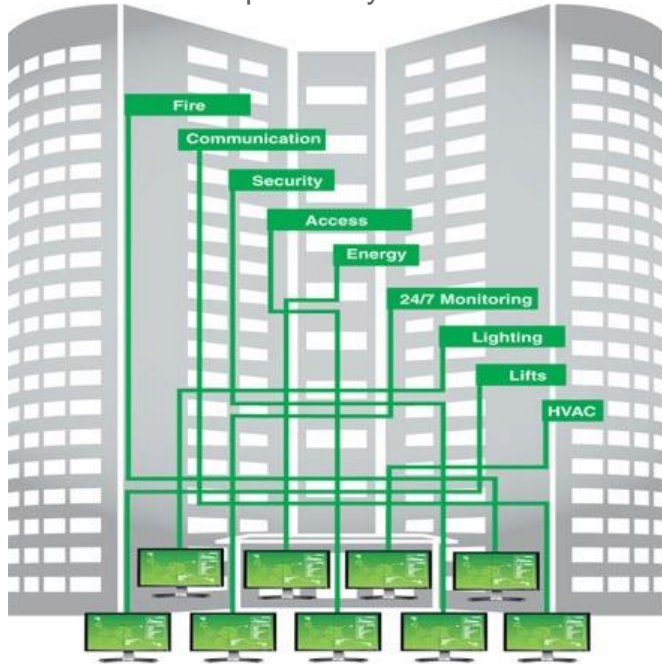


- HMI Server Primary
- HMI Server Secondary
- Factory Talk Historian
- SQL Server
- Domain Controller
- Asset Center
- Tag Server
- Antivirus Server
- OPC Server
- Cluster Management
- Engineering Workstation 1
- Engineering Workstation 2



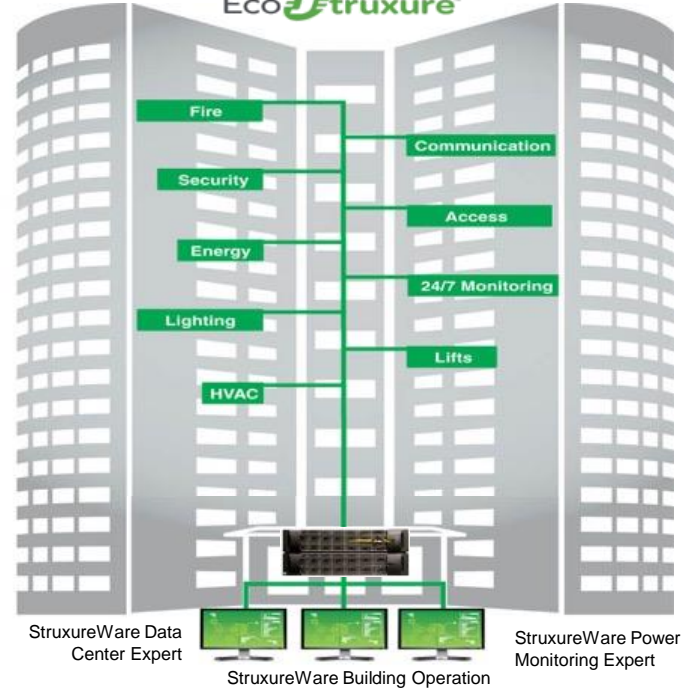
Multiple Siloed VS Integrated Architecture

Disparate Systems



Multiple siloed systems

Integrated with
EcoStruxure™



Integrated Solution

Stratus sweet spot in Mining (礦業)

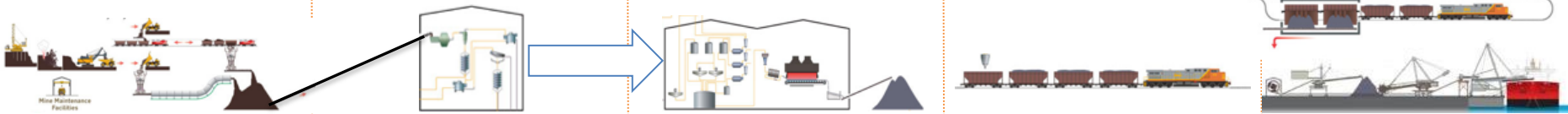
Mining Operations

Concentrate Productions

Pelletizing

Railway Transportation

Stock pilling & Vessel Loading



- **Personal Safety Screen**
- **Intelligent Video Monitoring**
- **Local Visualization and Control** (Sensors with ztC Edge)
- **Public Broadcast System**

- **SCADA & Command Centre**
- **Tracking & Fencing (Visual)**

Fleet Management System

Fleet Management System

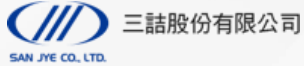
Train Signalling & Control

Automated Port Solution

Stratus sweet spot in Mining (礦業)



Stratus Edge Computing



- Achieved zero interruption and zero loss of transaction data with ftServer
- Simple to operate and maintain
- Avoiding high cost and system complexity of deploying and managing other high availability solutions



- Ability to integrate several applications on a single node ruggedized system **{Workload Consolidation}**
- Removes workload from IT & OT personnel **{Talent Shortage}**
- Simplicity in setting up and easy to support
- Virtualization allows standardization and ease of scaling up



- Always-On availability of area control system to meet health and safety requirements in hot rolling mill, using ftServer
- Eliminated need for complex, costly clustering solutions
- Non-disruptive system maintenance and repair



- Easy deployment of ztC Edge, running AVEVA Edge and InTouch
- Easy recovery from failure without the need to resynchronize databases
- Reduce risk of future cost of upgrade

Stratus Edge Computing

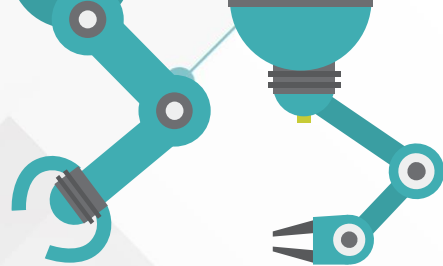


- Ease of deployment of AVEVA System Platform & Historian
- System Resilience
- Smaller TCO
- Easy to maintain

- Highly Reliable
- Eliminated risks and challenges of integrating SCADA/MES/Historian systems with failover clusters;
- Deployed at edge so ease of operation, manageability, maintenance are key;
- Long-term hardware support and maintenance offering peace-of-mind assurance.

- ftServer running Steel L2 Applications, Model Server, Process Control in hot rolling production line
- Eliminated complex and costly clustering solutions
- Easy to manage, on-site engineers are OT personal – As simple as possible

- Removing H/W dependency w/ virtualization
- Consolidation of multiple IPCs running AVEVA InTouch into Stratus
- Increased reliability
- Easy maintenance



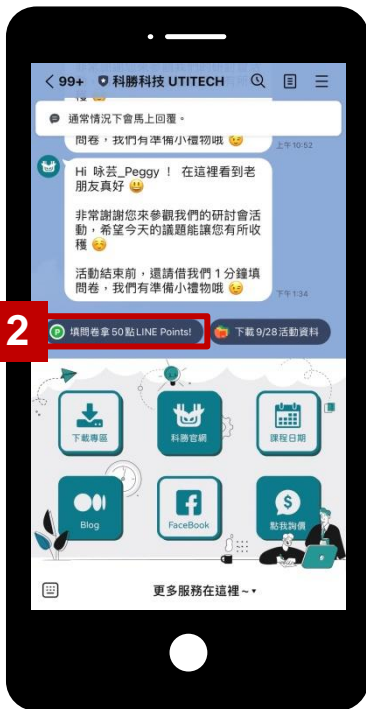
Q&A

掃描 QR code 加入科勝官方 Line 帳號

1

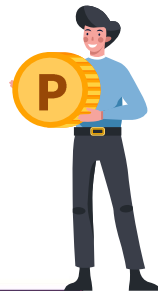


貴賓入場證
背面



1. 今日活動限定：
掃 QR code 填問卷，
拿LINE Points! 點數 50 點
(名額有限 送完為止)

2. 下載活動簡報：
點按左下【簡報下載】智
慧化數字工廠；
或輸入關鍵字「下載9/28
活動簡報」。



技術支援

線上與線下即時的技術支援

- 週一到週五 9:00 AM~6:00 PM
- 由我們經驗豐富的工程師隨時待命為您服務！
- 您可以使用我們專為技術服務的官方 LINE 帳號，即時與工程師線上討論問題、傳送照片、檔案，或是諮詢產品方案。
- 在 LINE 上輸入關鍵字，還可獲得軟體檔案的載點，迅速又方便。
- 同時我們也提供電話、Email、遠端連線等服務方式，讓您在有需要的時候隨時找得到我們。
- 技術服務專線：+886-7-8152813 #666
- 技術服務 Email：techsupport@utitech.com.tw



掃我獲得 LINE 服務！



- ✓ 電話服務
- ✓ Email 服務
- ✓ 電腦遠端連線
- ✓ 線上即時處理問題
- ✓ 提供軟體載點
- ✓ 產品方案迅速諮詢

A central image showing two hands shaking in a firm grip, symbolizing a partnership or agreement. The hands are positioned in the center, with the background being a semi-transparent, light-colored cityscape with various skyscrapers and buildings. The top of the image is framed by a blue sky with white clouds and stylized blue mountains on either side.

THANK YOU!

Smart Technologies Driving Tomorrow's Production