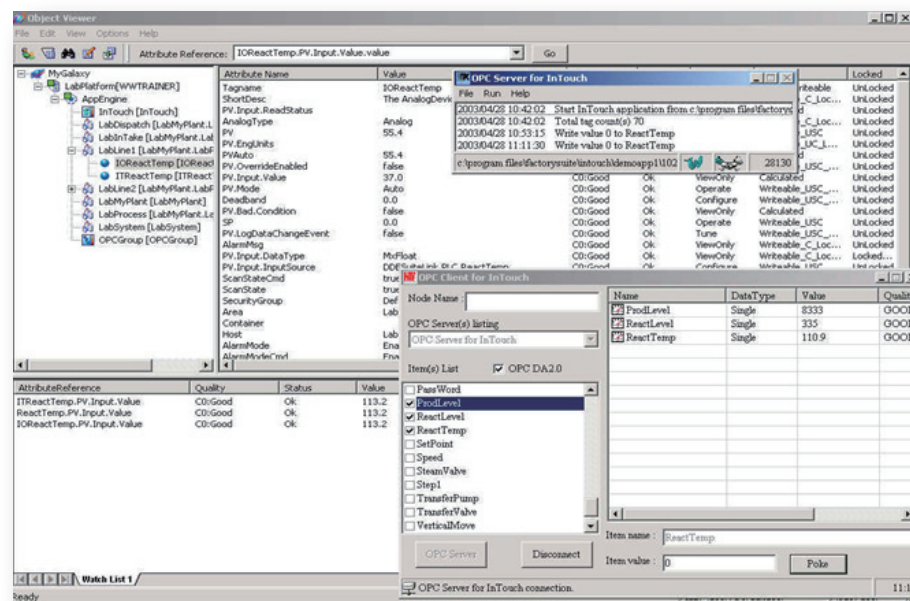


OPC Server for InTouch

完美支援您的系統

- Windows 98
- Windows NT 4.0
- Windows 2000 Pro/Server
- Windows XP Pro
- Windows 2003 Server
- Windows 2008 Server
- Windows 7



OVERVIEW

ITOPCSvr (HTT OPC Server for InTouch) 是一個能讓 InTouch 成為 OPC Server 並允許 OPC 存取端從 Wonderware® InTouch 獲得 Tag 資料的軟體。ITOPCSvr 與 InTouch 之間的通訊是透 Wonderware® IDEA 的方式。意謂著若有二個以上的程式利用 IDEA 同時對 ITOPCSvr 進行通訊時會有衝突發生。

FEATURE

■ 容易使用

只需要與 InTouch 一起安裝在圖控電腦上，OPC 存取端就可以透過 ITOPCSvr 瀏覽到 InTouch 的點名稱資料庫，不需要對 ITOPCSvr 進行任何設定。

■ 強大的通訊能力

ITOPCSvr 在 Tag 數量以及連線數方面沒有限制。Tag 的數量限制主要是以 InTouch 為主。另外，Tag 數值的更新時間可以在 ITOPCSvr 中設定(預設值為 500ms)。

支援子點名稱

ITOPCSvr 不只是可以提供 Tag 的數值，也可以提供 InTouch 中 Tag 的子點名稱資訊，支援的子點名稱如下：

- Analog type Alarm attributes
 - Alarm of Value
 - .HiHiLimit, .HiHiStatus, .HiLimit, .HiStatus,
 - .LoLimit, .LoStatus, .LoLoLimit, .LoLoStatus
 - Alarm of Deviation
 - .MinorDevPct, .MinorDevStatus,
 - .MajorDevPct, .MajorDevStatus, .DevTarget
 - Alarm of ROC(Rate Of Change)
 - .ROCPct, .ROCStatus
- Analog, Discrete type Alarm
 - .Alarm, .Ack, .Unack, .AlarmEnabled
- Indirect and Group Var attribute
 - .Name
- Alarm Group & Group Var
 - .Alarm, .Ack, .Unack, .AlarmEnabled
- I/O type
 - .RawValue

遵循之 OPC 標準

- Data Access V1.0、V2.05A、V3.0
- Alarms and Events V1.1
- Data Access Automation Interface Standard V2.0
- OPC Common Definitions and Interfaces V1.0

ITOPCSvr 安裝要求

- 安裝 Sentinel driver
- 安裝 InTouch 環境

Utitech I/O Server List

UTSC-0021C	AD-Link NUDAM	NuDAM-6000 Module
UTSC-0011C	Advantech ADAM	ADAM-4000 IO Module
UTSC-0341	AP500	
UTSC-0141C	APCI	APCI 250, 500, VMB/6
UTSC-0311C	AXIOM DPPC130	BITLink
UTSC-0051C	BOC Edwards Confidential SCINET	SpectraSure gas cabinet
UTSC-0111C	Carrier DATALINK	Chiller Virtual Controller
UTSC-0071C	COOPER TUBOCOMPRESSOR QUAD2000	Quad2000 Compressor
UTSC-0271C	DANIEL	Daniel Flow meter
UTSC-0151C	DGH	DGH-1700 series Module
UTSC-0372C	DNS OPC Server	
UTSC-0401C	EMU I/O Driver	
UTSC-0291C	FATEK FB	FACON FB-28MC PLC
UTSC-0081C	FUJI ELECTRIC MF120	MICREX-F 120H PLC
UTSC-0082C	FUJI ELECTRIC MPC60A	MPC-60A Multi-function Relay
UTSC-0083C	FUJI ELECTRIC PNA3	PNA3
UTSC-0261C	G21	G21 Series Preset Counter
UTSC-0371T	GDRIVER I/O Server	
UTSC-0171C	HCP	Pulse type controller
UTSC-0211C	Honeywell UDC3000	UDC-3000
UTSC-0422C	I/O Server package(SMR FM200)	
UTSC-0231C	INV SW94	SW-94 Seismometer
UTSC-0061C	IPURGE	iPurge Controller
UTSC-0251C	LISTEC	SC-2000 Fire Equipment
UTSC-0091C	Matsushita Electric CBM	Cubicle Monitor Commuication Meter
UTSC-0281C	MCMOTION	MicroMotion Flow meter
UTSC-0161C	Micron Technology UP100	UltraPurge-100
UTSC-0121C	Mitsubishi FX2	FX2(N)
UTSC0123T	Mitsubishi AJ71QE71	A,Q, QnA PLC
UTSC0121C	Mitsubishi MELSECA	A Series PLC
UTSC-0041C(O)	Modicom MB (OEM)	
UTSC-0043C	Modicon MBSLAVE	Modbus
UTSC-0043T	Modicon MBSLAVE TCP	
UTSC0041C	Modicon Modbus I/O Server	
UTSC0042T	Modicon Modbus NET I/O Server	
UTSC-0321C	National FP3	FP3 PLC
UTSC-03405	OPC Server for InTouch	
UTSC-0181C	Patcalr I/O Server (PART)	PDS-PA
UTSC-0381C	Peak I/O Server	
UTSC-0101C	PILLER PMS	Piller UPS
UTSC-0201C	Riken BL1200	BL1200 Gas detector
UTSC-0202C	Riken MF2	BL7000 Gas detector
UTSC-0371	RKC FAREX-SR OPL Driver	
UTSC-0241C	RKC INSTRUMENT INC RKCCB	RKC-CB Digital Controller
I/O Server01	RTC I/O Server	
UTSC-0501C	SanRex DC Auto HKD Series I/O Server	
UTSC-03406	Schedulling	
UTSC-0192U	Semi-Gas Systems AP220ST	GSM5 Serial Comm Card Mark II
UTSC-0191C	Semi-Gas Systems SEMIGET	
UTSC-0301C	Shape JW	JW-21x
UTSC-0221C	UART	Captions machine
UTSC-0421C	Weather Station I/O Driver	
UTSC-0031T	Yaskawa CP218IF	CP-218IF/TX PLC
UTSC-0391C	YOKO York	York Machine
UTSC-0132C	ZAG I/O Driver	CM4 Gas detector
UTSC-0131C	Zellweger SYS16	SYSTEM 16 Bi-Directional
UTSC-0361C	上傳PC1 Driver	
UTSC-0351C	地震儀SM-23 I/O Server	