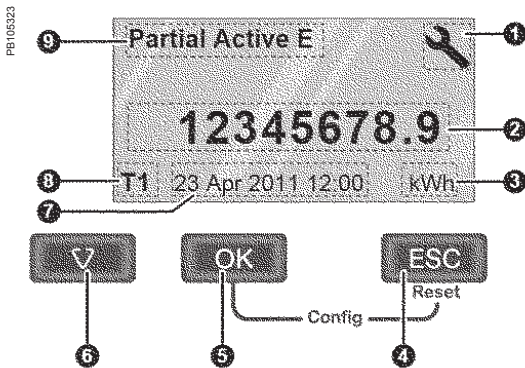




Acti 9 iEM3100/3200 energy meter



Acti 9 iEM3300 energy meter



Front Panel Display and Buttons

- 1 Configuration mode
- 2 Values and parameters
- 3 Unit
- 4 Cancellation
- 5 Confirmation
- 6 Selection
- 7 Date and time
- 8 Tariff currently used (on select models)
- 9 Functions/Measurements

- The Acti 9 iEM3000 Energy Meter Series offers a cost-attractive, competitive range of DIN rail-mounted energy meters ideal for sub-billing and cost allocation applications.

Combined with communication systems, like Smart Link, the Acti 9 iEM3000 Series makes it easy to integrate electrical distribution measurements into customer's facility management systems. It's the right energy meter at the right price for the right job.

Three versions are available: 63A direct measure (iEM3100 models), current transformers associated meter (iEM3200 models), and 125A direct measure (iEM3300 models). For each range, eight versions are available (seven for the iEM3300) to satisfy basic to advanced applications:

- iEM3100/iEM3200/iEM3300: kWh meter with partial counter
- iEM3110/iEM3210/iEM3310: kWh meter with partial counter and pulse output. MID certified.
- iEM3115/iEM3215: multi-tariff meter controlled by digital input or internal clock, MID certified.
- iEM3135/iEM3235/iEM3335: energy meter, four quadrant, multi-tariffs with partial counter and current, voltage, power measurement. M-Bus communication, digital I/O and MID certified.
- iEM3150/iEM3250/iEM3350: kWh meter with partial counter and current, voltage, power measurement. Modbus communication.
- iEM3155/iEM3255/iEM3355: energy meter, four quadrant, multi-tariffs with partial counter and current, voltage, power measurement. Modbus communication, digital I/O, MID certified.
- iEM3165/iEM3265/iEM3365: energy meter, four quadrant, multi-tariffs with partial counter and current, voltage, power measurement. BACnet communication, digital I/O and MID certified.
- iEM3175/iEM3275/iEM3375: energy meter, four quadrant, multi-tariffs with partial counter and current, voltage, power measurement. LON communication, digital input and MID certified.

Innovative design makes the meters smart and simple:

- Easy to install for panel builders
- Easy to commission for contractors and installers
- Easy to operate for end users

Applications

Cost management applications

- Bill verification
- Sub-billing, including WAGES view (four user-defined tariffs)
- Cost allocation, including WAGES view

Network management applications

- Basic electrical parameters like current, voltage and power
- Onboard overload alarm to avoid circuit overload and trip
- Easy integration with PLC systems by input/output interface

Market segments

- Buildings & Industry
- Data centres and networks
- Infrastructure (airports, road tunnels, telecom)

Characteristics

- Self-powered meters
- Chain measurement (meters + CTs) accuracy class 1
- Compliance with IEC 61557-12, IEC 62053-21/22, IEC 62053-23, EN50470-3
- Compact, 5 module width (iEM3100 & iEM3200) 7 module width (iEM3300)
- Graphical display for easy viewing
- Onboard Modbus, LON, M-Bus or BACnet communication
- Easy wiring (without CTs) Acti 9 iEM3100 and iEM3300 models
- Double fixation on DIN rail (horizontal or vertical)
- Anti-tamper security features ensure the integrity of your data
- MID compliant (selected models) providing certified accuracy and data security

Function guide	iEM3100 iEM3200 iEM3300	iEM3110 iEM3210 iEM3310	iEM3115 iEM3215	iEM3135 iEM3235 iEM3335	iEM3150 iEM3250 iEM3350	iEM3155 iEM3255 iEM3355	iEM3165 iEM3265 iEM3365	iEM3175 iEM3275 iEM3375
Width (18 mm module, DIN rail mounting)	5 / 5 / 7	5 / 5 / 7	5 / 5	5 / 5 / 7	5 / 5 / 7	5 / 5 / 7	5 / 5 / 7	5 / 5 / 7
Direct measurement (up to 63A or 125A)	63A / - / 125A	63A / - / 125A	63A / -	63A / - / 125A	63A / - / 125A	63A / - / 125A	63A / - / 125A	63A / - / 125A
Measurement inputs through CTs (1A, 5A)	- / ■ / -	- / ■ / -	- / ■	- / ■ / -	- / ■ / -	- / ■ / -	- / ■ / -	- / ■ / -
Measurement inputs through VTs				- / ■ / -	- / ■ / -	- / ■ / -	- / ■ / -	- / ■ / -
Active Energy measurements class (Total & partial kWh)	1 / 0.5S / 1	1 / 0.5S / 1	1 / 0.5S	1 / 0.5S / 1	1 / 0.5S / 1	1 / 0.5S / 1	1 / 0.5S / 1	1 / 0.5S / 1
Four Quadrant Energy measurements				■		■	■	■
Electrical measurements (I, V, P, ...)				■	■	■	■	■
Multi-tariff (internal clock)			4	4		4	4	4
Multi-tariff (external control)			4	2		2	2	2
Measurement display (number of lines)	3	3	3	3	3	3	3	3
Digital inputs	Programmable (Tariff control or WAGES input)			1		1	1	1
	Tariff control only		2					
Digital outputs	Programmable (kWh pulse or kWh alarm)			1		1	1	
	kWh pulse only	1						
kWh overload alarm				1		1	1	
M-Bus protocol				■				
Modbus protocol					■	■		
BACnet protocol							■	
LON								■
MID (legal metrology certification)		■	■	■		■	■	■



Acti9 iEM3100 models direct connected (63 A) Direct connected up to 63 A



Acti9 iEM3200 models (1 A / 5 A CT connected)

Connectivity advantages

Programmable digital input	External tariff control signal (4 tariffs) Remote Reset partial counter External status, e.g. breaker status Collect WAGES pulses
Programmable digital output	kWh overload alarm (iEM3135, iEM3155, iEM3165, iEM3235, iEM3255, iEM3265, iEM3335, iEM3355, iEM3365) kWh pulses
Graphic LCD display	Scroll energies Current, voltage, power, frequency, power factor
Communication	Serial communication options are available with M-Bus, Modbus, BACnet or LON protocols

Standards

IEC standards	IEC 61557-12, IEC 61036, IEC 61010, IEC 62053-21/22 Class 1 and Class 0.5S, IEC 62053-23
---------------	---

Multi-tariff capability

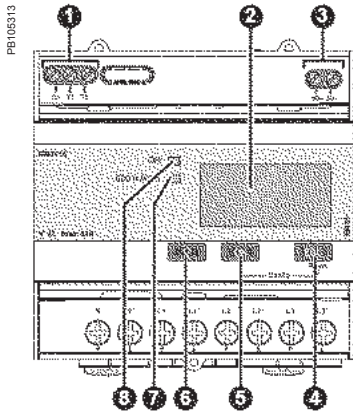
The Acti9 iEM3000 Series allows arrangement of kWh consumption in four different registers. This can be controlled by:

- Digital Inputs. Signal can be provided by PLC or utilities
- Internal clock programmable by HMI
- Through communication

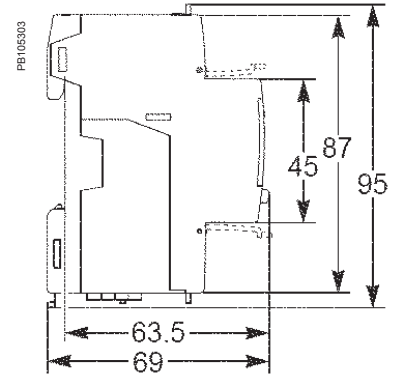
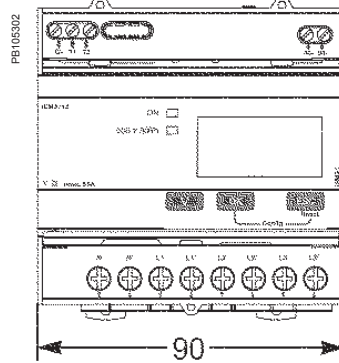
This function allows users to:

- Make tenant metering for dual source applications to differentiate backup source or utility source
- Understand well the consumption during working time and non working time, and between working days and weekends
- Follow up feeders consumption in line with utility tariff rates

Specification guide	iEM3100/iEM3300 Models							
	iEM3100 iEM3300	iEM3110 iEM3310	iEM3115	iEM3135 iEM3335	iEM3150 iEM3350	iEM3155 iEM3355	iEM3165 iEM3365	iEM3175 iEM3375
Current (max.) Direct connected (iEM31xx)	63A for iEM3100 models, 125A for iEM3300 models							
Meter constant LED	500/kWh							
Pulse output		Up to 1000p/kWh		Up to 1000p/kWh		Up to 1000p/kWh		
Multi-tariff			4 tariffs	4 tariffs			4 tariffs	
Communication				M-bus	Modbus	Modbus	BACnet	LON
DI/DO		0/1	2/0	1/1		1/1	1/1	1/0
MID (EN50470-3)		■		■		■	■	■
Network	1P+N, 3P, 3P+N							
Accuracy class	Class 1 (IEC 62053-21 and IEC61557-12) Class B (EN50470-3)							
Wiring capacity	16 mm ² for iEM3100 models, 50 mm ² for iEM3300 models							
Display max.	LCD 99999999.9kWh							
Voltage (L-L)	3 x 100/173 V AC to 3 x 277/480 V AC (50/60 Hz)							
IP protection	IP40 front panel and IP20 casing							
Temperature	-25°C to 55°C (K55)							
Product size	5 x 18 mm for iEM3100 models, 7 x 18 mm for iEM3300 models							
Overvoltage and measurement	Category III, Degree of pollution 2							
kWh	■	■	■	■	■	■	■	■
kVARh				■		■	■	■
Active power				■	■	■	■	■
Reactive power				■		■	■	■
Currents and voltages				■	■	■	■	■
Overload alarm				■		■	■	■
Hour counter				■		■	■	■



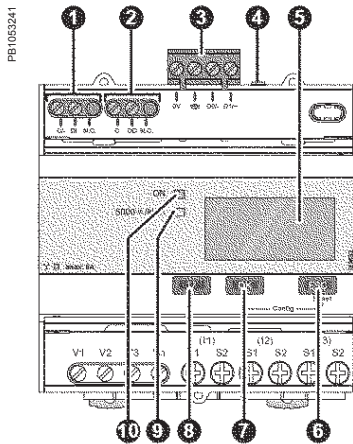
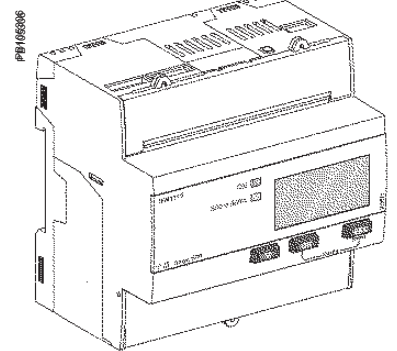
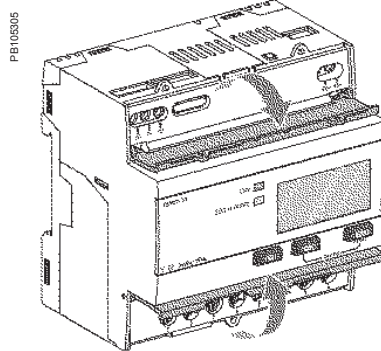
iEM3000/iEM3200 series dimensions



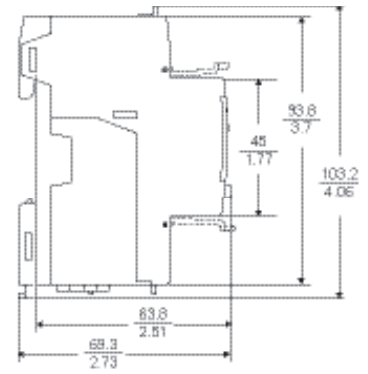
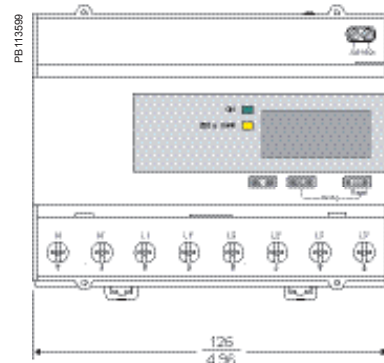
Acti 9 iEM3000 Series parts

1. Digital inputs for tariff control (iEM3115 / iEM3215)
2. Display for measurement and configuration
3. Pulse out for remote transfer (iEM3110 / iEM3210)
4. **ESC** Cancellation
5. **OK** Confirmation
6. **∇** Selection
7. Flashing yellow meter indicator to check accuracy
8. Green indicator: on/off, error

Acti 9 iEM3100/iEM3200 Series front flaps open and closed

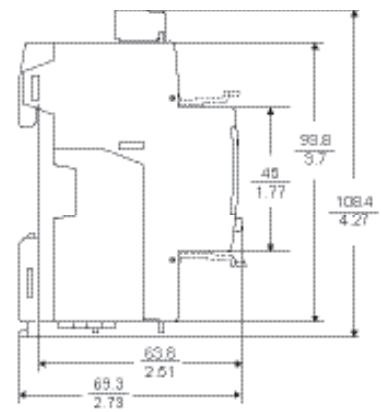
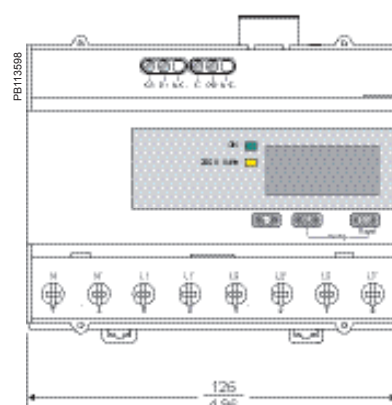


iEM3300 series dimensions



Acti 9 iEM3000 Series parts

1. Digital inputs for tariff control (iEM3115 / iEM3215)
2. Display for measurement and configuration
3. Pulse out for remote transfer (iEM3110 / iEM3210)
4. **ESC** Cancellation
5. **OK** Confirmation
6. **∇** Selection
7. Flashing yellow meter indicator to check accuracy
8. Green indicator: on/off, error



Meter model and description	Current measurement	Part no.
iEM3100 basic energy meter	Direct connected 63 A	A9MEM3100
iEM3110 energy meter with pulse output	Direct connected 63 A	A9MEM3110
iEM3115 multi-tariff energy meter	Direct connected 63 A	A9MEM3115
iEM3135 advanced multi-tariff energy meter & electrical parameter plus M-Bus comm port	Direct connected 63 A	A9MEM3135
iEM3150 energy meter & electrical parameter plus Modbus RS485 comm port	Direct connected 63 A	A9MEM3150
iEM3155 advanced multi-tariff energy meter & electrical parameter plus Modbus RS485 comm port	Direct connected 63 A	A9MEM3155
iEM3165 advanced multi-tariff energy meter & electrical parameter plus BACnet MS/TP comm port	Direct connected 63 A	A9MEM3165
iEM3175 advanced multi-tariff energy meter & electrical parameter plus LON TP/FT-10 comm port	Direct connected 63 A	A9MEM3175
iEM3200 basic energy meter	Transformer connected 5 A	A9MEM3200
iEM3210 energy meter with pulse output	Transformer connected 5 A	A9MEM3210
iEM3215 multi-tariff energy meter	Transformer connected 5 A	A9MEM3215
iEM3235 advanced multi-tariff energy meter & electrical parameter plus M-Bus comm port	Transformer connected 5 A	A9MEM3235
iEM3250 energy meter & electrical parameter plus Modbus RS485 comm port	Transformer connected 5 A	A9MEM3250
iEM3255 advanced multi-tariff energy meter & electrical parameter plus Modbus RS485 comm port	Transformer connected 5 A	A9MEM3255
iEM3265 advanced multi-tariff energy meter & electrical parameter plus BACnet MS/TP comm port	Transformer connected 5 A	A9MEM3265
iEM3275 advanced multi-tariff energy meter & electrical parameter plus LON TP/FT-10 comm port	Transformer connected 5 A	A9MEM3275
iEM3300 basic energy meter	Direct connected 125 A	A9MEM3300
iEM3310 energy meter with pulse output	Direct connected 125 A	A9MEM3310
iEM3335 advanced multi-tariff energy meter & electrical parameter plus M-Bus comm port	Direct connected 125 A	A9MEM3335
iEM3350 energy meter & electrical parameter plus Modbus RS485 comm port	Direct connected 125 A	A9MEM3350
iEM3355 advanced multi-tariff energy meter & electrical parameter plus Modbus RS485 comm port	Direct connected 125 A	A9MEM3355
iEM3365 advanced multi-tariff energy meter & electrical parameter plus BACnet MS/TP comm port	Direct connected 125 A	A9MEM3365
iEM3375 advanced multi-tariff energy meter & electrical parameter plus LON TP/FT-10 comm port	Direct connected 125 A	A9MEM3375