



SuiteVoyager™ 2.0

INDUSTRIAL INTELLIGENCE PORTAL

SuiteVoyager 2.0 is an industrial intelligence portal by Wonderware®, the world's leading supplier of industrial automation software. SuiteVoyager 2.0 enables organizations to leverage and distribute industrial intelligence via the Internet or intranet, empowering users to improve the bottom line.

SuiteVoyager is the first scalable, extensible and multilingual industrial intelligence portal in the world of industrial automation. This innovative new approach enables users to securely access, analyze, and visualize plant floor information. SuiteVoyager is the perfect complement to existing manufacturing information systems, because it consolidates and distributes valuable industrial intelligence to more users, by giving them open and secure access to all critical performance data.

SuiteVoyager can deliver personalized manufacturing information to every user, from senior operations executives and plant managers to engineers and maintenance personnel. People at any level of an organization can view key performance indicators and monitor quality and real-time process information pertinent to them, gaining a better understanding of their operations and enabling them to identify opportunities for improvement.

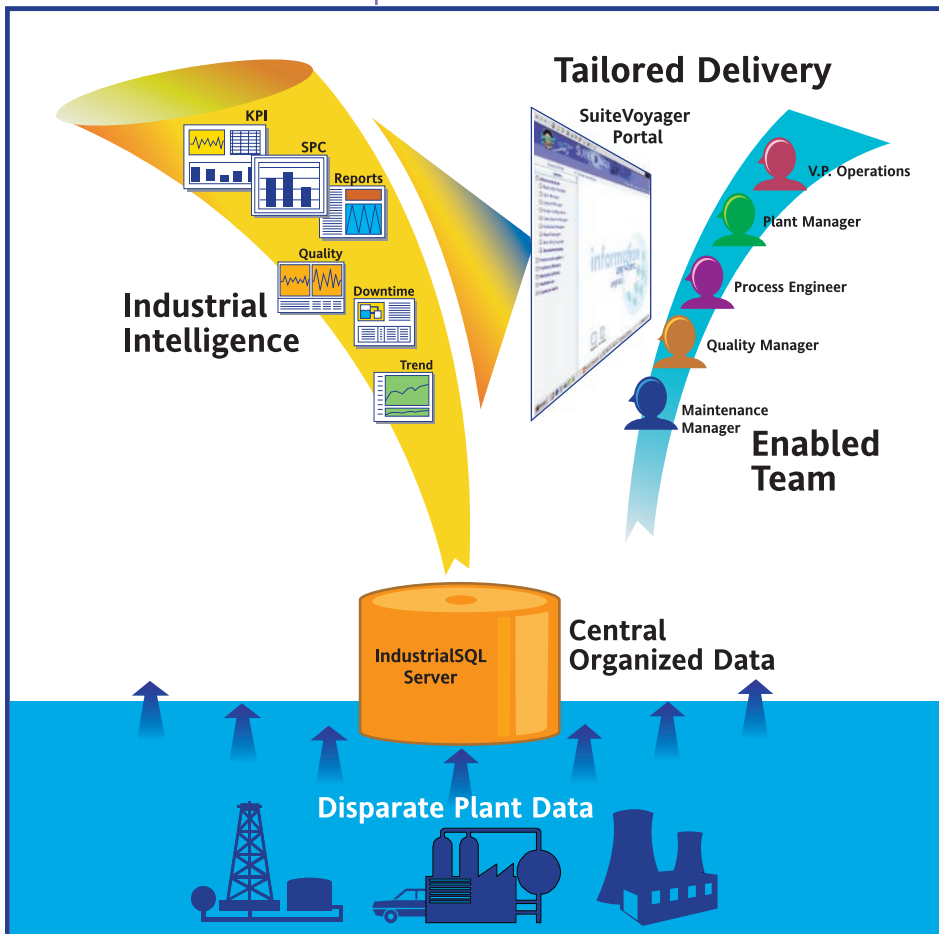
SuiteVoyager™ 2.0

PRODUCT DATASHEET

*Information
anywhere,
anytime*

LEVERAGING THE INDUSTRIAL INTELLIGENCE PORTAL

A portal is the natural choice for a company looking for a powerful solution to obtaining, organizing, and visualizing information while providing common navigation to many users.



SuiteVoyager combines all of the capabilities necessary for a portal to deliver industrial intelligence, allowing the presentation and analysis of plant floor information through a standard client application - Internet Explorer. Equally important is the fact that SuiteVoyager is easy to use and deploy, enabling the same engineers who already create supervisory control applications to create, configure, and deploy a fully functional industrial intelligence portal.

Businesses today are under tremendous pressure to react to dynamically changing customer demands, improve production efficiency, manage costs, and maximize profits. Meeting these demands requires a manufacturing information system that meets the needs of factory floor operators and supervisors by supplying summary, analytical, and real-time status information; and by providing control capabilities, allowing users to immediately rectify identified issues. The SuiteVoyager Portal improves productivity by allowing the customized delivery of mission-critical information to any user, regardless of their physical location.

HIGHLIGHTS

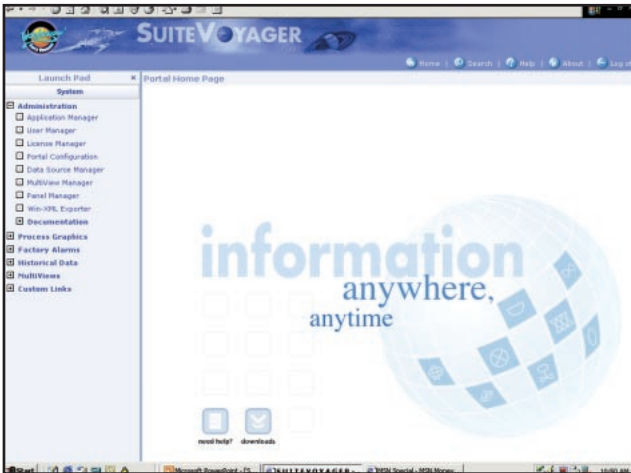
Wonderware's SuiteVoyager Portal establishes a new benchmark for consolidating and delivering manufacturing information from multiple application sources to thin-clients, while maintaining the highest security levels possible.

SuiteVoyager provides the best way to visualize and interact with plant floor information coming from Wonderware InTouch® systems, I/O servers, and the IndustrialSQL™ historian over the Internet/intranet, with a standard browser. In addition, the SuiteVoyager Portal connects to any ADO/ODBC compliant database via the built-in SQL Data Access Provider.

The content available through the SuiteVoyager Portal is unlimited as a result of its design as a Microsoft™ web part container and its ability to access information through industry standard web services.

The portal interface provides access to manufacturing information via a secure framework, common navigation method, and user-friendly graphical user interface. This easy-to-use portal interface offers users an organized, personalized view of critical manufacturing information. Its simple and easy-to-configure architecture requires no knowledge of website design or construction tools.

SuiteVoyager's architecture has been designed for scalability, extensibility, and centralized administration. Customizable sections allow easy integration with other websites, company applications, reports and resources. It also offers single sign-on and a portal search capability.



SuiteVoyager™ Portal Homepage

HIGH PERFORMANCE

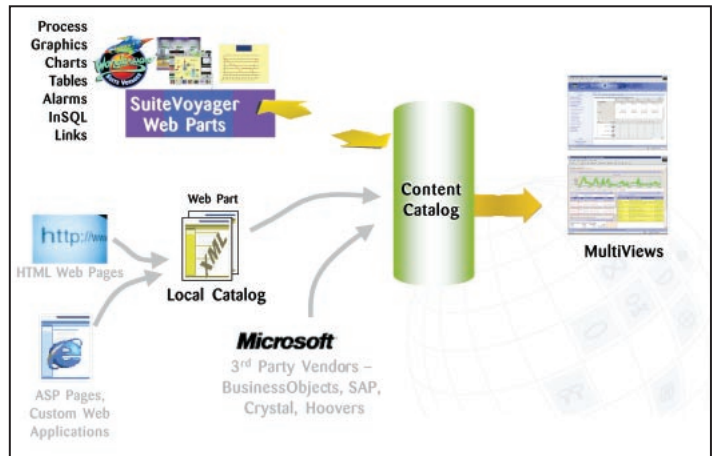
SuiteVoyager introduces a new generation in process graphics designed specifically for "thin" browser-based clients. Realizing the total benefits of thin-client computing requires optimal use of network resources. Traditionally, graphics were contained in large files that took a very long time to download and used a great deal of network bandwidth. In contrast, SuiteVoyager delivers interactive HTML pages by converting existing InTouch graphic windows and associated animation to XML (Extensible Mark-up Language), applying an XSL transformation (Extensible

Style Language), and rendering VML (Vector Mark-up Language) graphics on the fly at the client machine. SuiteVoyager also automatically connects to data sources. These new XML-based graphics with client-side rendering reduce the amount of information transported between client and server by as much as 80%!

An additional benefit is that the conversion of InTouch Windows to an XML format enables dynamic window scalability. In other words, when browser windows are resized, the graphics they display are dynamically resized.

INTOUCH XML WINDOW EXPORTER

SuiteVoyager comes with an XML graphic exporter utility for use with FactorySuite® InTouch WindowMaker, allowing one tool to develop graphical applications for both InTouch and SuiteVoyager. This utility allows for browsing of InTouch window sets, converting selected windows to XML/XSL, and publishing the converted window sets to the portal. Once published, any browser-based client (IE5.5+) with proper security clearance can access the published windows in the portal.



Web-part container

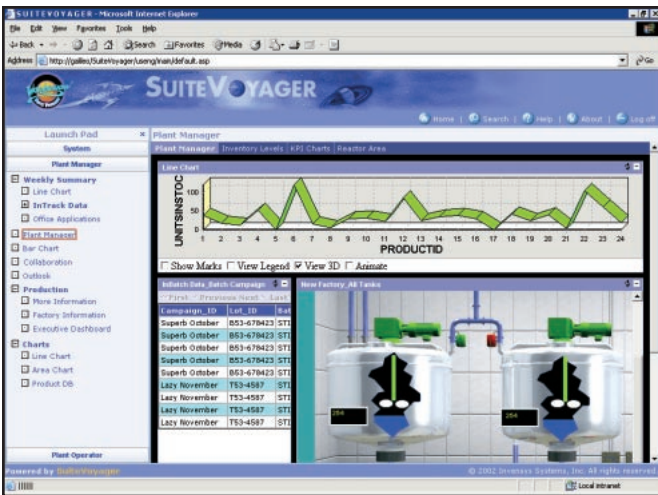
Extensible Web-Part Container

A portal's most important asset is the content it provides to users. SuiteVoyager expands the breadth of accessible information through the use of web-parts. Web-parts allow specific functions, such as the presentation of data in a grid format, to be encapsulated and used in any compliant container.

As a web part container, SuiteVoyager can host:

- Information from FactorySuite
- Any web-based application or file
- Web parts created by Microsoft or third-party software vendors.

In addition, SuiteVoyager presents published InTouch browser-based windows, current and historical InTouch alarm queries, and IndustrialSQL™ information as a web part. These web parts may then be integrated into other compliant web part containers, such as Microsoft Sharepoint.



MultiView window

Flexible Design Environment

SuiteVoyager provides users the ability to quickly build powerful windows consisting of multiple web parts on one screen. This enables the simultaneous presentation and analysis of information from many application sources.

SuiteVoyager's layout and content wizard simplifies the creation of views and navigation with its user-friendly point-and-click interface.

Tailored Delivery

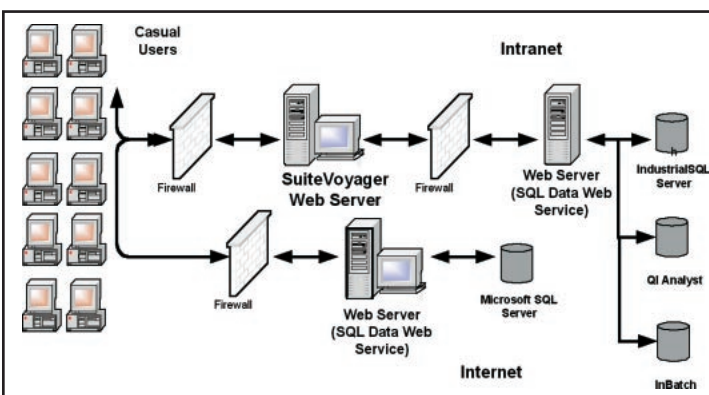
For a portal to be useful to an entire enterprise, it must segment the information and personalize it for the end-user. SuiteVoyager accomplishes this by enabling the creation of panels. Panels allow users to view and control only the information they have privileges to access. Panels provide another security mechanism for the administrator to use when limiting access to information through the portal.

Performance

SuiteVoyager's performance has been optimized for fast rendering of graphics and fast connection to data sources. Throughout the portal, mechanisms allow for quick portal navigation and information display. Intelligent window-caching on both client and server result in superior display switching performance.

Open and Extensible

The SuiteVoyager SQL Data Provider web service can access information from any ADO/ODBC-compliant data source in the



industry. Because it's a web service, data is retrieved quickly and securely over the Internet/intranet using standard TCP/IP communication with the database. Information is then transferred to the SuiteVoyager Portal Server using the industry standard TCP/IP port, meaning that no modifications are necessary to existing firewall configurations. This ensures the highest levels of network security. In addition, with the SuiteVoyager Developer Edition, it is possible to extend the type of information available through the portal to include any data source in your business. The Developer Edition enables software programmers to build applications and web services that integrate and interface directly with the SuiteVoyager Portal. The Developer Edition is available separately from the Portal.

ADDITIONAL FEATURES

SuiteVoyager offers:

- An integrated website or portal for many types of factory floor data that can be deployed throughout the entire organization
- An easy-to-install portal that requires no prior knowledge of specific website-building tools
- Scalability, though new "made-for-the-web" technologies like XML and web servers
- Access to information where it resides (without re-engineering to add new data sources or analysis tools)
- Information management by controlling the type of user access (read-only, full-control, or no access) as well as presentation and navigation
- Analysis tools that go beyond typical HMI windows and facilitate the integration of:
 - ▼ FactorySuite software products
 - ▼ Web parts created by Microsoft or any third-party software vendor
 - ▼ Web-based applications that can display any information designed for the Web
 - ▼ Reports, documents, and drawings that are in HTML format

SUITEVOYAGER DEVELOPMENT PLATFORM

The SuiteVoyager Portal Platform consists of seven major pieces: the base framework, data handlers, license information manager, deployment manager, data repository, application manager, and security administrator.

Configurable/Customizable Framework

The SuiteVoyager Portal framework has been pre-configured for the automation user. No prior knowledge of website building or website-building tools is required. The installation of SuiteVoyager will create a default Portal that can be used in two modes: user and configuration.

The system administrator will be able to configure users, data providers, licenses, applications, system and portal parameters including security, alarm queries, and folders for converted graphic windows. Unless users are specifically given administrative privileges, they will not even see the administrative section of the portal.

Users will be presented with intuitive navigation of converted HMI windows, reports, documents, alarms, charts, data tables and history, and real-time information. Users will also benefit from the convenience of single sign-on (authenticated by NT Security) and the ability to search InTouch tagnames.

■ Customization

The portal administrator can customize SuiteVoyager's Portal Home Page by:

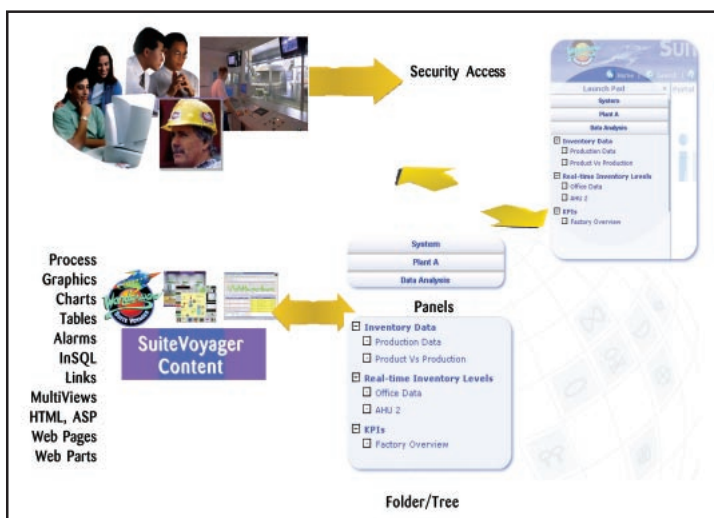
- ▼ Altering the entire top banner and designing the top section of the portal with company logos, names or a file
- ▼ Adding links to published reports, documents, other websites and resources
- ▼ Creating panels to segregate information to match specific requirements and viewing needs of the end user

■ Portal Search

The portal comes standard with smart search capabilities to locate tagnames used in windowsets displayed on the portal. The search feature will return all windowsets that contain the tagname.

Security

SuiteVoyager secures access to plant floor information by tightly integrating with Microsoft WindowsNT/2000 security. The SuiteVoyager Portal also supports Secure Sockets Layer (SSL), digital certificates, password authentication, and Windows NT challenge/response. The SuiteVoyager Portal is designed to be "firewall friendly", using standard TCP/IP ports. It also supports connections between itself and one or more clients while maintaining compatibility with proxy server intermediaries.



Security – Panel Management

For additional security, the SuiteVoyager Portal allows administrators to give specific users privileges to read, write or configure - or they can deny users access by assigning them to a pre-configured security role and segmenting the information that they can view in the portal. Using the new SQL Data Provider, information can be obtained from any ADO/ODBC compliant database on the Internet, without opening additional ports on the firewall.

For more information about your organization's firewall, contact your Internet administrator.

Concurrent User Licensing

SuiteVoyager supports concurrent user licensing. All of the license information resides on the portal. When a client tries to access SuiteVoyager through Internet Explorer, the license manager checks to see if a license is available and grants or denies access to the client depending on license availability. Connections to SQL Data Providers are managed concurrently. Multiple users can access one connection to a database and multiple SQL Data Connections can be added to the portal.

License Information Management

Since licensing resides on the portal, SuiteVoyager provides an easy-to-use license management system that allows the administrator to monitor activity on the portal. A license historian provides information about past usage and helps the administrator provide licenses to everyone who needs one.

Multiple Data Source Configuration

Through the portal, the administrator can configure access to multiple alarm providers, InSQL Servers, and SQL Data Providers. The administrator can also manage the SuiteVoyager database. Client users are provided with an easy-to-use interface to select information from multiple data providers and can also view past queries in report format. Windowsets are easily configured to display information from different I/O servers and/or InTouch applications.

Multilingual Support

The SuiteVoyager Portal detects the language of the browser client and automatically displays the portal in that language. The language can be changed on the fly. Initial languages supported include English, German, French, and Japanese.

FACTORYSUITE APPLICATIONS

Browser-Based InTouch Window Sets

Using only a browser, client users can view and interact with published InTouch XML application windows. These windows run within a browser and do not require the installation of licensed InTouch software on the user's computer or portal.

These windows are dynamically scalable and feature two navigation choices: standard InTouch methods including pop-up windows or menu-bar web-style navigation. The portal administrator can assign read/write privileges based on user roles, I/P address or InTouch data nodes. No software or licensing, other than the browser is required on the client.

InTouch Alarms

The SuiteVoyager Portal allows you to access FactorySuite alarm information from AlarmSuite and the InTouch 7.11 Distributed Alarm System. Both current and historical alarms are available with sortable fields and options to view the information based on date and time.

IndustrialSQL Server Historian

SuiteVoyager provides ad-hoc search capabilities to data stored in IndustrialSQL Server (InSQL) versions 7.1 and 8.0. InSQL reports include sections such as general tag information, historical data, graphs, statistics, and event data. The information is configurable to specific times, dates, and time resolutions. These queries can be saved and distributed to users based upon their privileges in the portal.

FactorySuite Advance Clients for Industrial Intelligence

SuiteVoyager Portal also supports the inclusion of Wondeware FactorySuite advanced client tools such as ActiveFactory, QI Analyst, and DT Analyst for reporting, general analysis, SPC, and downtime analysis.

SPECIFICATIONS

Server Hardware Required:

- 700 MHz Pentium II
- 256 MB RAM
- 2 GB Disk Space (NTFS required)
- Super VGA monitor with 256 colors and 800 x 600 or higher pixel resolution

Recommended Hardware:

- 1 GHz Pentium 4 or better
- 1 GB of RAM
- 10 GB of Disk Space or more (depending on the number of InTouch windows published to the portal)
- Super VGA monitor with 24-bit color and 1024 x 768 pixel resolution

Suggested Internet Connection:

- Modem 28.8 K: 5 Users
- Dedicated Digital 56 K: 10 Users
- ISDN 128 K: 20 Users
- T1 1.5 M: 56 Users
- T3: 4,500 Users
- ATM OC3 155 M: 15,000 Users

Server Software Requirements:

- Windows 2000 Server* or Advanced Server* + Internet Information Server 5.0
- Internet Explorer 6.0*
- MS SQL Server 2000* installed somewhere on the local network

Client Software Requirements:

- Windows 98
- Windows ME
- Windows NT 4.0
- Windows 2000
- Windows XP
- Internet Explorer 5.5+

Data Providers:

- InTouch Version 7.1 and AlarmSuite Version 7.1
- InTouch Version 7.11
- IndustrialSQL Server Versions 7.1 and 8.0
- Any DDE or SuiteLink I/O Server
- Any ADO-compliant database

**with the latest service and security packs applied*



©2002 Invensys Systems, Inc. All rights reserved. No part of the material protected by this copyright may be reproduced or utilized in any form or by any means, electronic or mechanical, including photocopying, recording, broadcasting, or by any information storage and retrieval system, without permission in writing from Invensys Systems, Inc.

Wonderware, FactorySuite, InTouch and Avantis are registered trademarks of Invensys plc, its subsidiaries and affiliates. ActiveFactory, ArcestrA, FactoryOffice, InTrack, InControl, InBatch, IndustrialSQL Server, MaintenanceSuite, QI Analyst, SCADAAlarm, SCADASuite, SuiteVoyager and Web Server are trademarks of Invensys plc, its subsidiaries and affiliates. All other brands may be trademarks of their respective owners.

Contact Wonderware or your local Distributor for information about software products for industrial automation.
Wonderware • 26561 Rancho Parkway South, Lake Forest, CA 92630 • Tel: (949) 727-3200 • Fax: (949) 727-3270

www.wonderware.com

PN 15-0070

Rev. 7/02