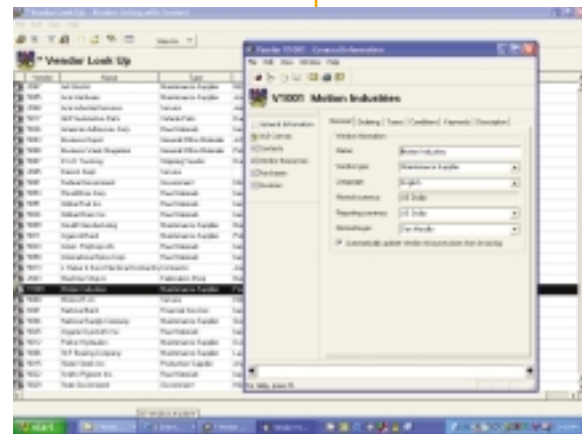


## Procurement

The main objective of the Procurement function in a maintenance environment is to minimize the cost of buying high volumes of MRO inventory items. This application focuses on fully automating the entire procurement process, including requisitions, purchase orders, expediting, receiving, quotations, contracts and invoice matching. Extensive analysis capabilities are available to streamline the procurement process and allow more time for the procurement professional to add value in contract negotiation and vendor relationship management.



## Workflow

A key feature of Avantis.PRO is the workflow enablement of its business objects. Workflow provides unparalleled flexibility to tailor business processes to meet your changing business conditions.

In traditionally developed software applications, business processes were hard-coded within the software. The software determined how you organized your work and the steps or procedures needed to accomplish your tasks. This forced you to mold your business to fit the software, thus limiting your options for defining and changing business processes. Today, as companies seek to achieve a unique competitive advantage by optimizing business processes, this approach is no longer acceptable.

Avantis.PRO's workflow solution gives you the ultimate flexibility to tailor business processes that make sense to your organization. In other words, you don't need to adapt to Avantis.PRO— Avantis.PRO adapts to you. The result is a considerable reduction in administrative workload over the long-term and enhanced flexibility to meet your enterprise's dynamic needs.

## Successful Implementations with InRIM

Our guaranteed implementation approach ensures that you can quickly utilize Avantis.PRO to maximize your return on assets and maintain your competitive edge. The Industrial Rapid Implementation Methodology (InRIM) is a structured, multi-component methodology that assures risk free implementations of Avantis.PRO without compromising the ongoing evolution and continued growth of the application's use. This is achieved through the application of a preformatted database and standard templated implementation tools.

InRIM is truly unique in that it is based on industry-standard best practices and offers a repeatable structure than can more predictably result in achieving your organizational objectives.

Avantis Asset Management Solutions is uniquely positioned to offer customers a real-time solution that provides the asset intelligence to the enterprise that will enable business decisions and ultimately reduce cost and maximize return on assets.



[www.avantis.net](http://www.avantis.net)  
[info@avantis.net](mailto:info@avantis.net)  
1-888-AVANTIS

Avantis, Invensys and FactorySuite are trademarks of Invensys plc or its subsidiaries and affiliated companies. All other marks may be trademarks of their respective holders. All rights reserved. Printed in U.S.A. Bulletin M20-2

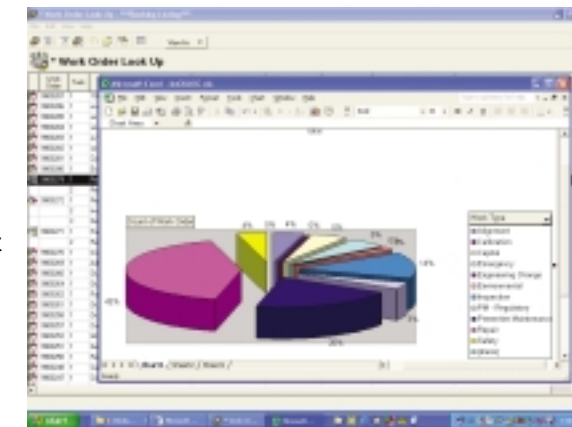
# Avantis.PRO is The Enterprise Asset Management solution for today's asset centric organizations.

## Asset Intelligence to Maximize Return on Assets

Avantis.PRO is the Enterprise Asset Management (EAM) solution designed to meet the sophisticated maintenance management requirements of today's asset-centric organizations. Designed with unparalleled functionality and flexibility, Avantis.PRO gives your operations a competitive edge by exploiting the power of plant floor information, transforming isolated data into asset intelligence – the insight you need to make informed business decisions with confidence.

## Access to Decision Support Information

Every decision you make is dependent on the information available to you. For instance, historical information is valuable for planning and developing maintenance strategies. Resource information lets you plan and schedule for optimum efficiency, both from a resource utilization and cost optimization standpoint. While most EAM systems are capable of capturing vast amounts of data, users often find it difficult to access their own data when making important operational or business decisions. Avantis.PRO is architected to provide you fast, easy access to your information, true asset intelligence. Using industry standard architecture, information is available across the enterprise for improved decision support. Remote, casual, executive and expert users are all empowered by the ability to access critical information how they need it and when they need it.



The Avantis.PRO Cabinet function provides views of your data, which are easy to create and customize. They allow users to create their own queries and reports by easily dragging and dropping fields. Every field in the database is available, including your own user-defined fields.

Through seamless integration to spreadsheet applications such as Microsoft Excel, cabinet information may be displayed graphically. You can easily perform analysis and create graphs, charts, and pivot tables without having to learn another application. Avantis.PRO turns the reams of maintenance data into decision-making information to support the enterprise.



# The Avantis.PRO Solution

## Entity Management

Invensys developed the "Entity" concept to maximize the flexibility of your equipment database. An entity is anything for which you may want to retain complete costing and maintenance activity records. An entity could be a piece of equipment, component, process line, factory, room, railway, division or any other element in the organization.

Avantis.PRO enables users to identify "parent-child" relationships that can be used to build hierarchies for cost rollups and operating statistics. A maintainable entity includes anything that needs to be repaired or serviced by your maintenance staff: e.g., a piece of equipment, assembly line, truck, or a repairable spare. An organizational entity refers to any arrangement of your enterprise that is used to collect cost, statistical, budget, or backlog information such as a division, cost center, or department.

By using the add-on feature, user-defined equipment nameplate information can be created and more importantly viewed by powerful search criteria.

## Safety

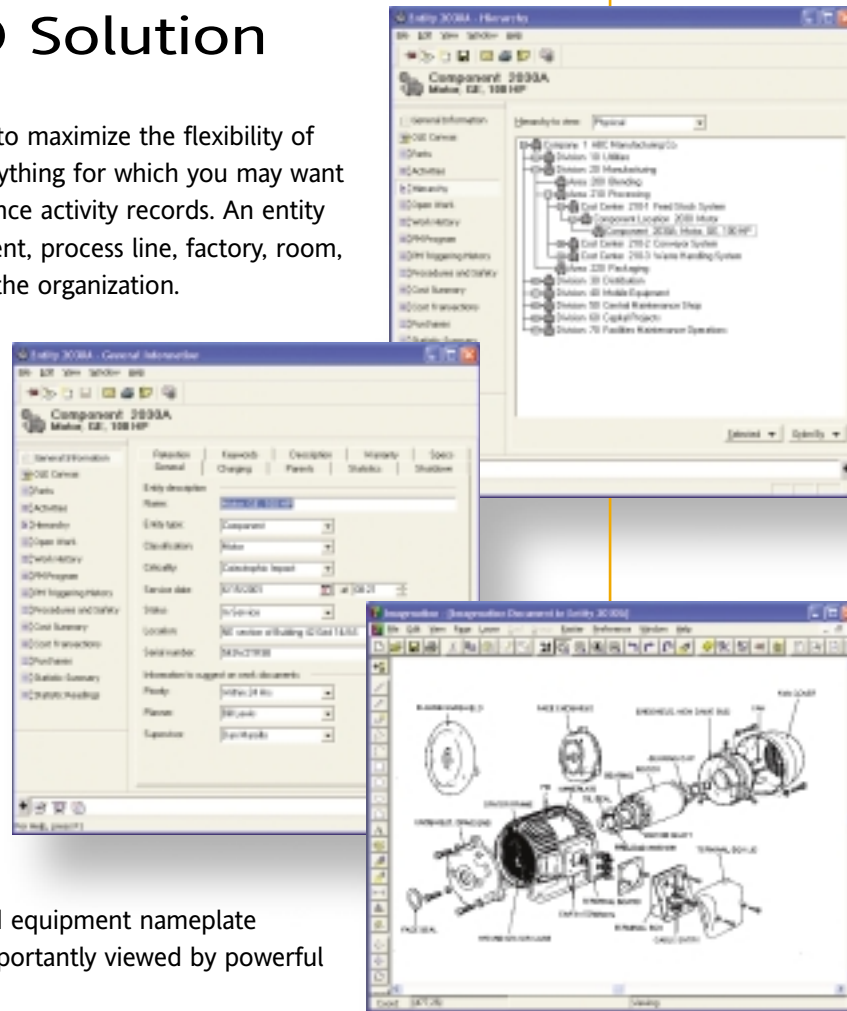
Providing personnel with proper and timely safety information is a critical element of an effective maintenance management program. Avantis.PRO automates the collection and dissemination of procedures such as lockout, tag-out, shutdown and startup information. Permit requirements and MSDS information is readily available for personnel to review prior to initiating any work.

## Reliability Analysis

Avantis.PRO builds a detailed history of equipment information based on day-to-day maintenance activities. Failure history including symptoms, the cause of failure, and action taken can be easily reviewed and analyzed. In addition, mean time between failure and mean time to repair reporting is available to determine proper fine tuning of equipment maintenance requirements.

## Work Management

Work Management ensures that maintenance personnel have control of incoming work, while at the same time requesters can track work in progress. The planning function ensures that labor, material, tools, drawings, and subcontractor require-



ments as well as safety information can be identified on work orders to support pro-active maintenance activities. In addition, a library of predefined standard jobs can be established to aid in the creation and execution of work orders.

Avantis.PRO's Work Management provides the tools to empower plant floor personnel to enter and view equipment related activities. The Operator's Log feature provides an easy to use mechanism to make notes and track activities related to a particular piece of equipment.

In addition, integration to the Inventory and Procurement functions ensures material availability, improved productivity of maintenance staff, better communication of needed supplies for Inventory and Procurement, and complete costing of all activities.

## Preventive Maintenance

The Preventive Maintenance (PM) function offers the ability to create a library of standard jobs with the automatic work order generation (based on any combination of user-defined triggering criteria: operating statistics, elapsed time, calendar date), inspection checklists and PM routes. The application is fully integrated to distributed control systems (DCS) such as the Invensys I/A Series® or Wonderware FactorySuite application to support the automated downloading of real-time operating statistics from the plant floor. The Preventive Maintenance function helps users manage maintenance in a proactive and planned manner, rather than treating maintenance as reactive or repair work.

## MRO Inventory

MRO Inventory addresses the main challenge of Maintenance, Repair and Operations inventory management, controlling a large number of unique and low unit value items that are subject to unpredictable demand. The system automates the reorder process by using calculated safety stock levels, replenishment lead times and sophisticated "available-to-promise" logic based on expected receipts (open purchase orders) and issues. The ability to establish multiple storerooms and locations as well as flexible categorization capabilities allows user defined grouping of items for searching, analyzing and reporting purposes.

